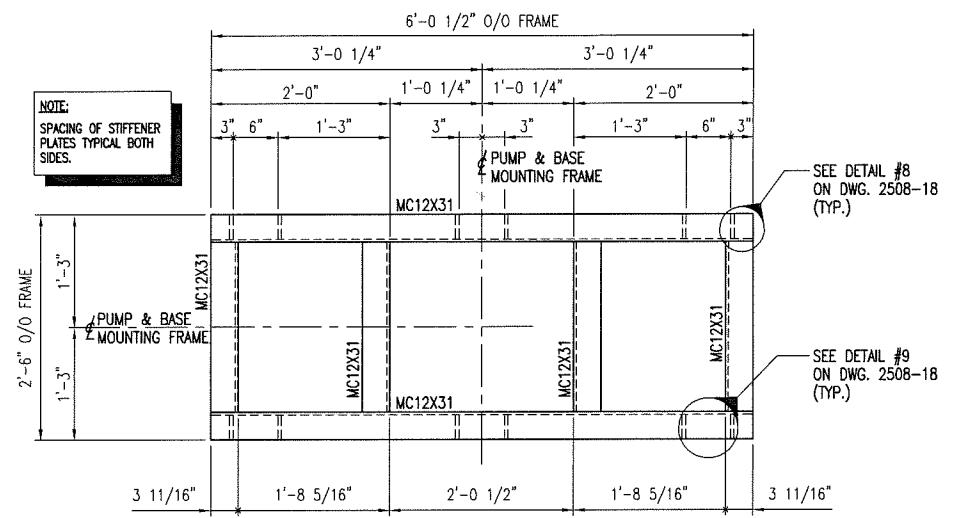
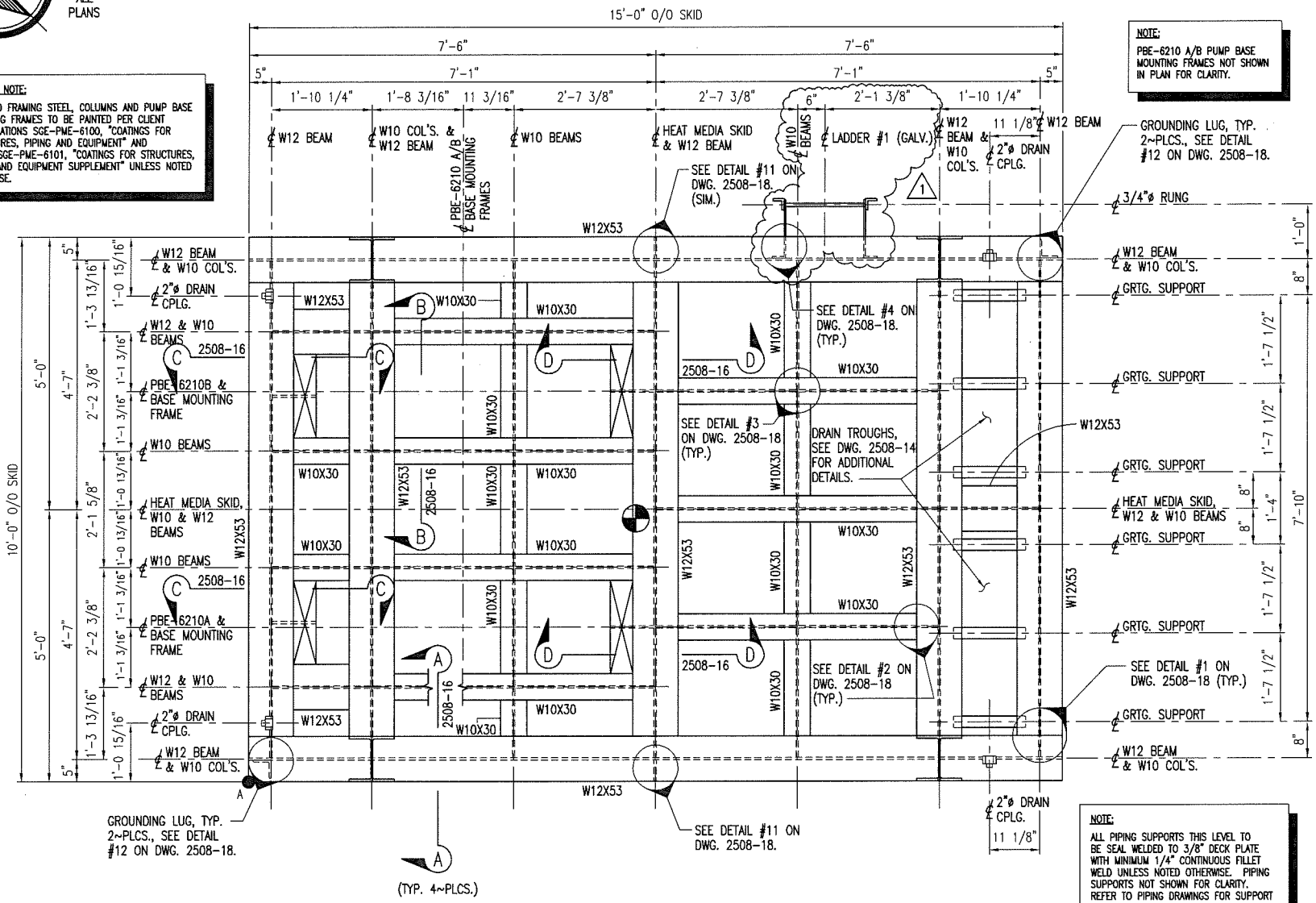


ALL PLANS

COATING NOTE:
ALL SKID FRAMING STEEL, COLUMNS AND PUMP BASE MOUNTING FRAMES TO BE PAINTED PER CLIENT SPECIFICATIONS SGE-PME-6100, "COATINGS FOR STRUCTURES, PIPING AND EQUIPMENT" AND 12078-SGE-PME-6101, "COATINGS FOR STRUCTURES, PIPING AND EQUIPMENT SUPPLEMENT" UNLESS NOTED OTHERWISE.

NOTE:
PBE-6210 A/B PUMP BASE MOUNTING FRAMES NOT SHOWN IN PLAN FOR CLARITY.

NOTE:
SPACING OF STIFFENER PLATES TYPICAL BOTH SIDES.



FRAMING PLAN - T.O.S. EL. 1'-0"
PUMPS PBE-6210 A/B BASE MOUNTING FRAME
(PUMP BASE MOUNTING FRAME TO BE FULL PENETRATION WELDED ASSEMBLY U.N.O.)
SCALE: 1" = 1'-0"
(2 ~ REQ'D.)

- REFERENCE DRAWINGS:**
- CIVIL / STRUCTURAL DRAWINGS**
 - 2508-12 HEAT MEDIA SKID ZZZ-6200 FRAMING PLAN LOWER DECK LEVEL
 - 2508-13 HEAT MEDIA SKID ZZZ-6200 FRAMING PLAN UPPER DECK LEVEL
 - 2508-14 HEAT MEDIA SKID ZZZ-6200 DECK PLATE PLAN LOWER DECK LEVEL
 - 2508-15 HEAT MEDIA SKID ZZZ-6200 STRUCTURAL STEEL ELEVATIONS
 - 2508-16 HEAT MEDIA SKID ZZZ-6200 MISCELLANEOUS STEEL SECTIONS & DETAILS
 - 2508-17 HEAT MEDIA SKID ZZZ-6200 MISCELLANEOUS STEEL SECTIONS & DETAILS
 - 2508-18 HEAT MEDIA SKID ZZZ-6200 MISCELLANEOUS STEEL DETAILS
 - 2508-19 HEAT MEDIA SKID ZZZ-6200 LIFTING ARRANGEMENT
 - MECHANICAL / PIPING DRAWINGS**
 - 2508-30 HEAT MEDIA SKID ZZZ-6200 PIPING PLAN LOWER DECK LEVEL
 - 2508-31 HEAT MEDIA SKID ZZZ-6200 PIPING PLAN UPPER DECK LEVEL
 - 2508-32 HEAT MEDIA SKID ZZZ-6200 PIPING PLAN SECTION A-A AND SECTION C-C
 - 2508-33 HEAT MEDIA SKID ZZZ-6200 PIPING PLAN SECTION B-B
 - 2508-34 HEAT MEDIA SKID ZZZ-6200 PIPING PLAN SECTION D-D

FRAMING PLAN - T.O.S. 0'-0" U.N.O.
ZZZ-6200 HEAT MEDIA SKID
(SKID TO BE FULL PENETRATION WELDED ASSEMBLY U.N.O.)
(T.O. DECK PLATE EL. +0'-0 3/8" U.N.O.)
SCALE: 3/4" = 1'-0"
(1 ~ REQ'D.)

NOTE:
ALL PIPING SUPPORTS THIS LEVEL TO BE SEAL WELDED TO 3/8" DECK PLATE WITH MINIMUM 1/4" CONTINUOUS FILLET WELD UNLESS NOTED OTHERWISE. PIPING SUPPORTS NOT SHOWN FOR CLARITY. REFER TO PIPING DRAWINGS FOR SUPPORT LOCATIONS.

ESTIMATED WEIGHTS FOR LOWER DECK LEVEL:

SKID STRUCTURAL STEEL, COLUMNS, DECK PLATE & GRATING	= 11,325 LBS. (5.66 SHORT TONS)
PUMP PBE-6210A (DRY)	= 1819 LBS. (0.91 SHORT TONS)
PUMP PBE-6210A (OPERATING)	= 1832 LBS. (0.92 SHORT TONS)
PUMP PBE-6210B (DRY)	= 1819 LBS. (0.91 SHORT TONS)
PUMP PBE-6210B (OPERATING)	= 1832 LBS. (0.92 SHORT TONS)
PIPING, VALVES & FITTINGS (DRY)	= 8240 LBS. (4.12 SHORT TONS)
PIPING, VALVES & FITTINGS (OPERATING)	= 9880 LBS. (4.94 SHORT TONS)
SUBTOTAL (DRY)	= 23203 LBS. (11.60 SHORT TONS)
SUBTOTAL (OPERATING)	= 24869 LBS. (12.43 SHORT TONS)
PERCENT INCREASE PER CLIENT SPECIFICATIONS (DRY)	= 2248 LBS. (1.12 SHORT TONS)
TOTAL ESTIMATED LOWER DECK LEVEL WEIGHT (DRY)	= 25451 LBS. (12.73 SHORT TONS)
TOTAL ESTIMATED LOWER DECK LEVEL WEIGHT (OPERATING)	= 27117 LBS. (13.56 SHORT TONS)
TOTAL ESTIMATED LOWER DECK LEVEL WEIGHT (HYDROTEST)	= 27117 LBS. (13.56 SHORT TONS)

CENTER OF GRAVITY						
DRY (EMPTY) *		OPERATING		HYDROTEST		
FT. - IN.	DECIMAL FT.	FT. - IN.	DECIMAL FT.	FT. - IN.	DECIMAL FT.	
X	7'-1 11/16"	7.1383	7'-2 5/8"	7.2178	7'-2 5/8"	7.2164
Y	4'-5 7/8"	4.4891	5'-3 1/4"	5.2714	5'-3 1/8"	5.2595
Z	4'-9 15/16"	4.8299	4'-5 1/2"	4.4601	4'-5 9/16"	4.4657

* CENTER OF GRAVITY AS SHOWN ON DRAWING REPRESENTS DRY (EMPTY) CASE
** REFERENCE POINT TAKEN AT NORTHWEST CORNER OF SKID (REFERENCE CALCULATIONS)

HEAT MEDIA SKID DECK ATTACHMENT:
BOTTOM FLANGE OF HEAT MEDIA SKID TO BE ATTACHED TO PLATFORM DECK BY 1/2" MINIMUM CONTINUOUS FILLET WELD UNLESS NOTED OTHERWISE.

ISSUED FOR FABRICATION
BY W. B. SHEEHY
DATE _____

CUSTOMER: _____
PURCHASE ORDER NO: _____

GULFEX, INC.
METAL FABRICATORS
PRESSURE VESSELS - CUSTOM FABRICATION
P. O. BOX 12720 HOUSTON, TEXAS 77217
(713) 946-6614

NO.	REVISION	BY	DATE	DATE	JOB NO.	SCALE	REVISION
				DRAWN	APPD.	DWG. NO.	